

The **District of Columbia Power Line Undergrounding** (DC PLUG) initiative is a partnership between the District of Columbia Government and Pepco to improve the resiliency of the District of Columbia's electric system by placing some of the system's most vulnerable electric distribution lines underground.

Why It's Important



Places 20 of the most vulnerable distribution power lines in Wards 3, 4, 5, 7 and 8 underground. Distribution lines in Wards 1, 2 and 6 are already primarily underground.



To improve reliability of selected lines by an estimated 95 percent.



Strengthens local energy infrastructure, making it more resilient against more frequent and severe weather driven by climate change.

Project construction began in 2019 and is expected to span 6–8 years, with activities taking place at different times in the affected wards. The construction schedule is available at dcpluginfo.com.

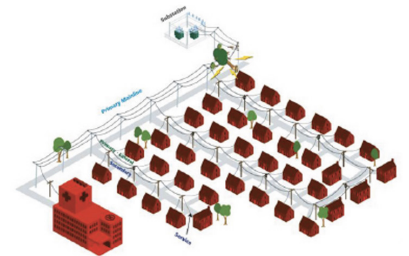
Working to Minimize Community Impact

We understand that work in the neighborhoods we serve can cause disruption, such as road and sidewalk closures, parking restrictions, rerouting of bicycle lanes and traffic flow congestion. We are committed to minimizing the impact to residents and communities as much as possible.

We coordinate with the District Department of Transportation (DDOT) to create traffic control plans that help ensure the public and our workers are safe, while keeping disruptions to a minimum. Proper flagging and signage are used to minimize traffic delays. As crews work, it is important for our customers to remain clear of worksites so crews may work safely, efficiently, and effectively, and for the safety of community members. Cyclists are urged to take extra caution on the roads in these areas. For issues residents may experience with roads and/or sidewalks, please visit the District Department of Transportation website to request repairs at ddot.dc.gov/page/request-repairs.

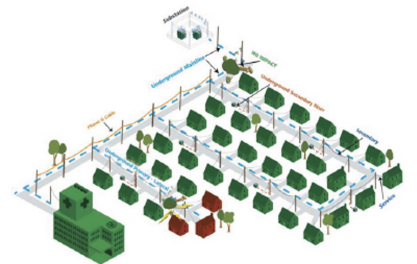
EXISTING OVERHEAD SYSTEM

■ Power OUTAGE
■ No Power OUTAGE



PROPOSED OVERHEAD SYSTEM

■ Power OUTAGE
■ No Power OUTAGE
--- Underground Lines
--- UG Secondary Riser



Temporary service interruptions may be necessary to safely complete some work and we will communicate with customers ahead of those planned interruptions.

Individual yards may also experience disturbance of sod, plants, and fences. We provide residents notice prior to any disruptions and are committed to restoring any impacted yards to their original state. We are also mindful of the need to protect neighborhood trees and, if needed, we conduct careful evaluation(s) of tree relocation and removal. Our team will continue to coordinate with certified arborists from DDOT's Urban Forestry Division to ensure the protection and maintenance of vegetation.

We appreciate your patience as we complete this work to improve service in your community.

Economic Growth Opportunities

The DC PLUG initiative will also contribute to the economy of the District of Columbia by stimulating economic growth through job creation for local and diverse businesses and workers. Pepco and DDOT work with the District's Office of Contracting and Procurement and the District Department of Small and Local Business Development to advertise the opportunities this work presents to local, diverse businesses.

Project Funding

The DC PLUG initiative is a \$500 million project and is jointly funded by Pepco and the District. The Pepco-funded portion is \$250 million, and the District will fund \$187.5 million. Up to an additional \$62.5 million will come from DDOT's capital improvement budget.

Pepco customer bills will include two annually adjusted charges to recover the costs of the \$250 million in Pepco funding and \$187.5 million in District funding. These surcharges are provided for by the legislation that effectuated the DC PLUG initiative. Residential Aid Discount customers are exempt from the charges.

Estimated monthly DC PLUG surcharges for a typical residential customer:

	Underground Project Charge (UPC)	Underground (UG) Rider
2022	\$0.03	\$0.84
2023	\$0.08	\$0.91

Average surcharge based on 692 kwh per month

Committed to Keeping You Informed

We notify residents and businesses who are directly affected by project construction early and often in accordance with the outreach plan filed with the Public Service Commission of the District of Columbia. This includes outreach meetings, presentations at Advisory Neighborhood Commissions, advertising, updates through social media and the website, and more. We also provide door hanger materials, neighborhood signage and other education materials.

Additional information about DC PLUG and its expected impact is available at dcpluginfo.com. Community members may also email questions@dcpluginfo.com or call **1-844-758-4146** for additional information on the project.