



DC Power Line Undergrounding (PLUG) Feeder 14093 OPEN HOUSE

District Department of Transportation (DDOT) and Pepco

September 21, 2023



Agenda

- DC PLUG Introductory Video
- DC PLUG Background
- Existing System Model
- Proposed Underground System Model
- Feeder Selection Process
- Biennial Plan
- Location Map
- Aerial Photos
- Business Engagement
- Questions & Answers
- Contact Information

DC PLUG Video



<https://dcpluginfo.com/about/>

Background



Background & Timeline

- Aug 2012**
The Mayor's Power Line Undergrounding Task Force is established
- May 2013**
The Task Force recommends a partnership between Pepco and the District of Columbia
- May 2014**
The Electric Company Infrastructure Improvement Financing Act becomes law
- May 2017**
Council of the District of Columbia amends the law
- Nov 2017**
The Public Service Commission of the District of Columbia approves the First Biennial Plan
- Jan 2020**
The Public Service Commission of the District of Columbia approves the Second Biennial Plan
- Jan 2022**
Approval from Public Service Commission of the District of Columbia on the Third Biennial Plan



Budget

Pepco Portion

\$250 Million

Recovered through Pepco Underground Project Charge

District Portion

\$187.5 Million

Recovered through Underground Rider

DDOT

up to \$62.5 Million

DDOT Capital Improvement Funding



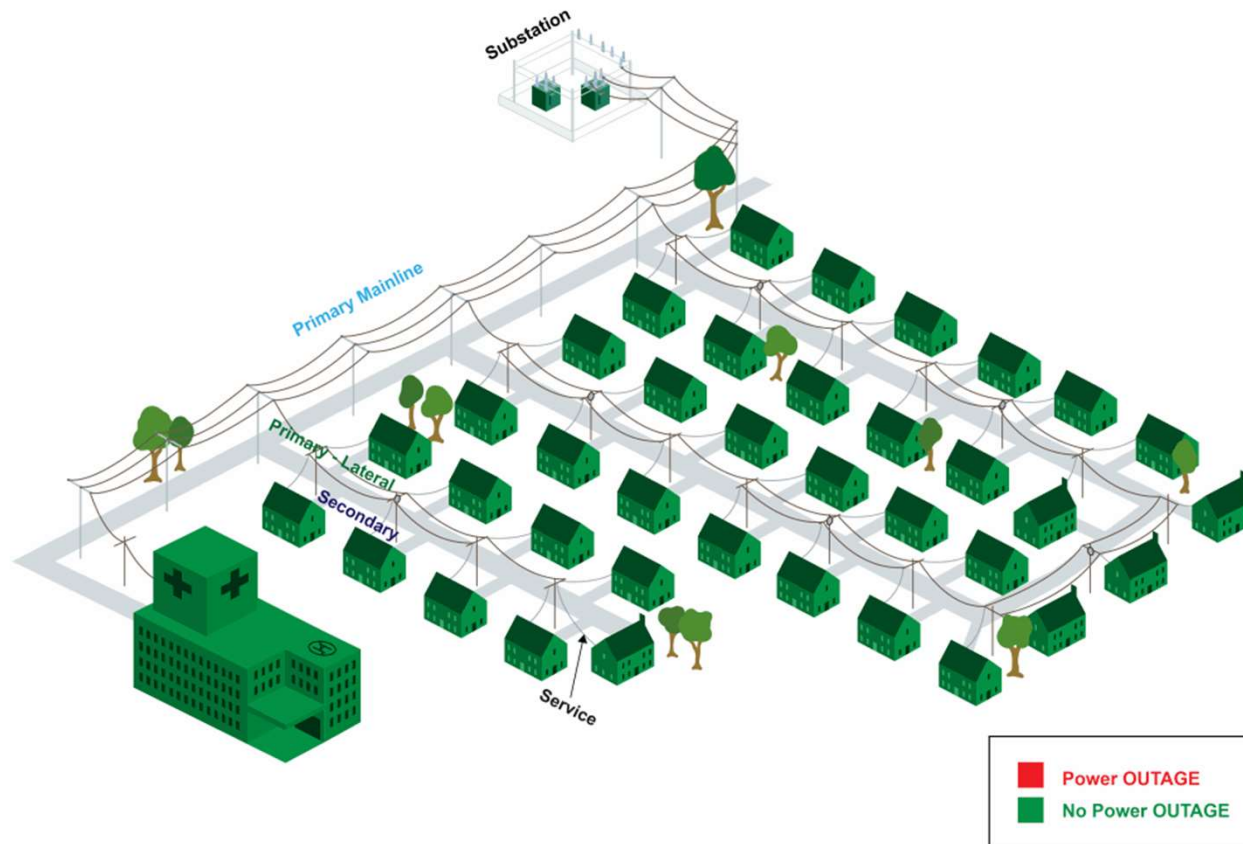
DC PLUG will provide resiliency against major storms and improve the reliability of the electric system



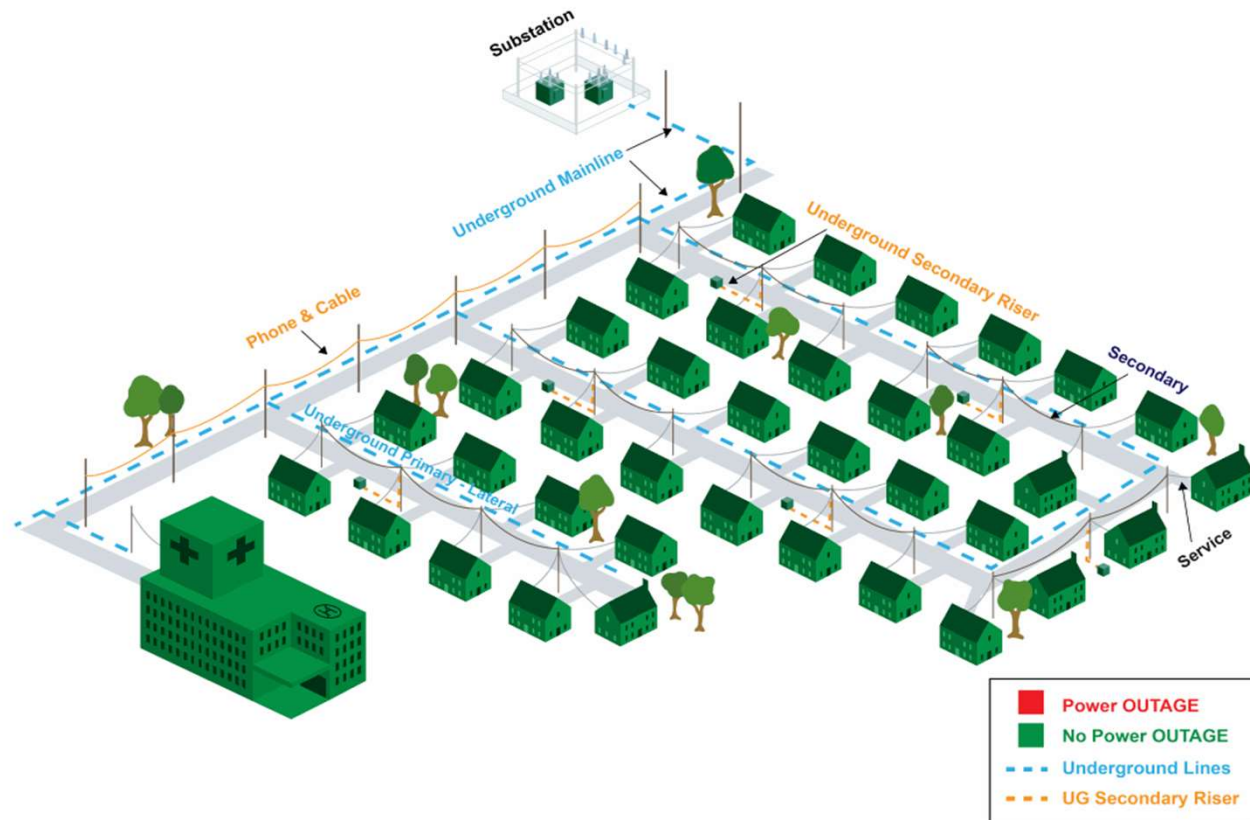
Multi-year program to underground up to 20 of the most vulnerable overhead distribution lines, spanning over 6-8 years with work beginning in early 2019



Existing Overhead System (Before DC PLUG)



Proposed Underground Plan (After DC PLUG)



Feeder Selection Process

In selecting the feeders, DDOT and Pepco followed a five-step process:

- Based on data from January 1, 2010 through December 31, 2016 for first biennial; January 1, 2010 through December 31, 2018 for second biennial, and January 1, 2010 through December 31, 2020 for third biennial, ranked feeders by historical reliability and customer minutes of interruptions reduced per dollar spent (SAIFI, SAIDI, CMI/\$).
- Identified the highest-ranked feeders in each of the five Wards (Wards 3, 4, 5, 7 and 8) of the District of Columbia characterized by a large concentration of overhead power lines and susceptibility to overhead outages.
- Analyzed ongoing reliability work as well as current and planned system work.
- Identified opportunities to take advantage of existing or planned DDOT roadway reconstruction projects.
- Finalized the feeder selection for inclusion in each Biennial Plan.



Biennial Plan

- In accordance with the Act, Pepco and DDOT filed a joint Biennial Plan on July 3, 2017 covering the two-year period, 2017-2019. The Second Biennial Plan was filed on September 30, 2019, and the Third Biennial Plan was submitted to the PSC on September 30, 2021.
- Under the Biennial Plan, DDOT primarily will construct the underground facilities, and Pepco primarily will install the underground electric distribution for six overhead feeders affected by outages.

1st Biennial Feeder	Ward	Neighborhoods
308	3	American University Park, Friendship Heights
14900	4	Hawthorne, Barnaby Woods, Chevy Chase, Friendship Heights
15009	4	Takoma Park, Manor Park
14007	5	Brookland, Michigan Park, Woodridge
368	7	Benning Ridge, Fort Dupont Park, Dupont Park, Civic Betterment, Marshall Heights, Fort Davis
14758	8	Congress Heights, Joint Base Anacostia-Bolling, Washington Highlands, Bellevue

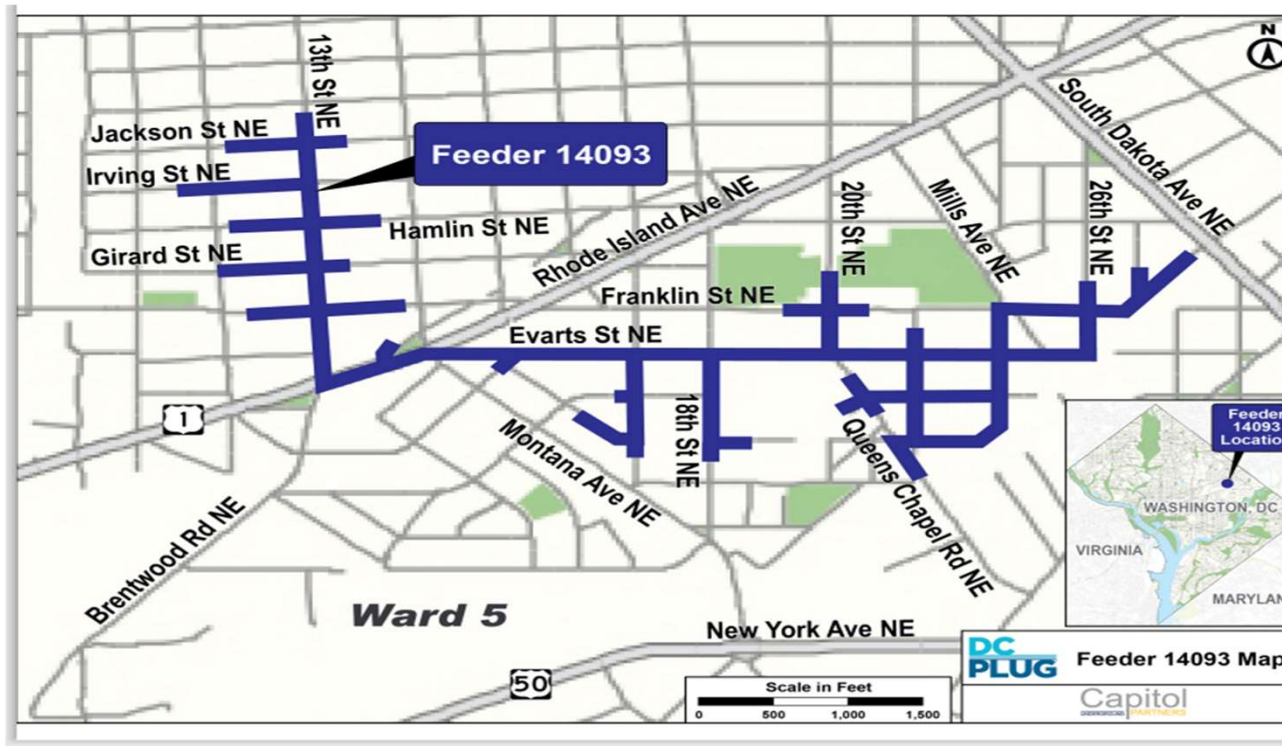
Biennial Plan

2 nd Biennial Feeder	Ward	Neighborhoods
467	3	Chevy Chase
14767	3	Kent, Palisades, Fort Drive, Foxhall Crescents, Berkley, Wesley Heights
15001	4	16th Street Heights, Crestwood, Rock Creek Park
15021	4	Brightwood, Petworth, Chillum
14008	5	Woodridge, Brentwood
14093	5	Brookland, Brentwood, Woodridge, National Arboretum, Gateway
118	7	Twining, Hillcrest, Randle Highlands, Penn Branch, Fort Davis
14702	7,8	Fairlawn, Randle Heights, Randle Highlands, Twining, Good Hope, Skyland
15166	8	Congress Heights, Congress Park, Randall Heights
15171	8	Congress Park, Douglass Dwellings, Shipley, Congress Heights

Biennial Plan

3 rd Biennial Feeder	Ward	Neighborhoods
00075	3	American University Park/ Spring Valley
00347	7	Randle Highlands / Hillcrest
14009	5	Edgewood
15174	8	Shipley / Douglass / Buena Vista / Knox Hill

Feeder 14093 Location Map



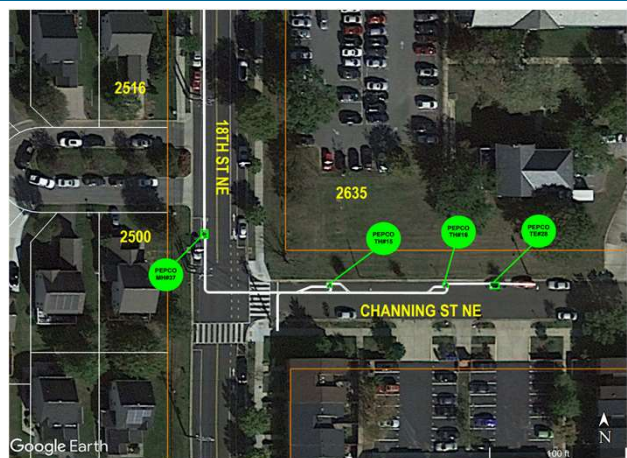
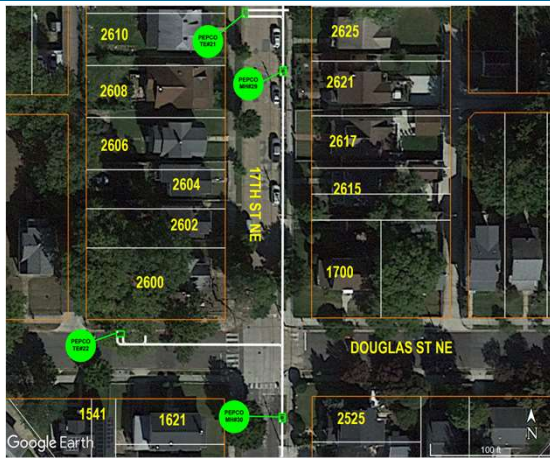
Feeder 14093 Aerial Photos



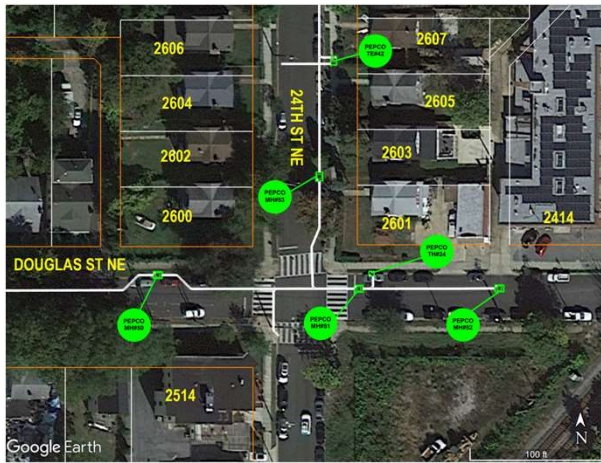
Feeder 14093 Aerial Photos



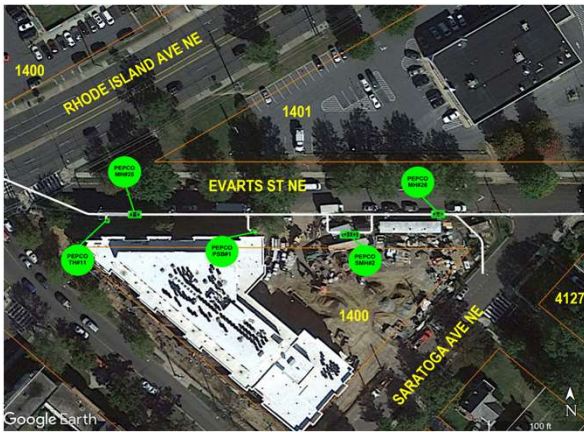
Feeder 14093 Aerial Photos



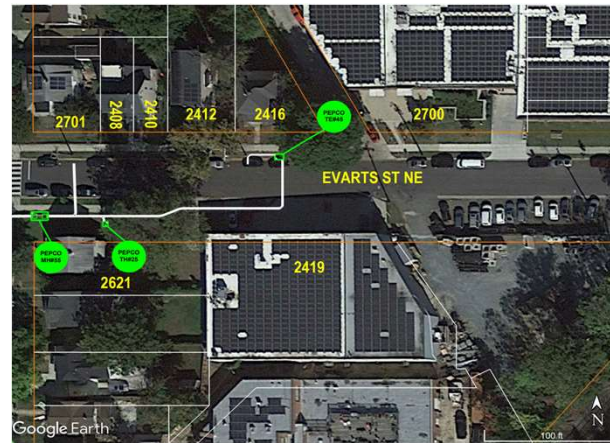
Feeder 14093 Aerial Photos



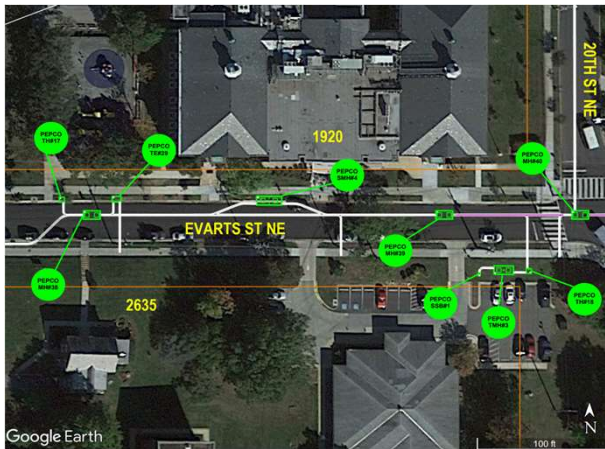
Feeder 14093 Aerial Photos



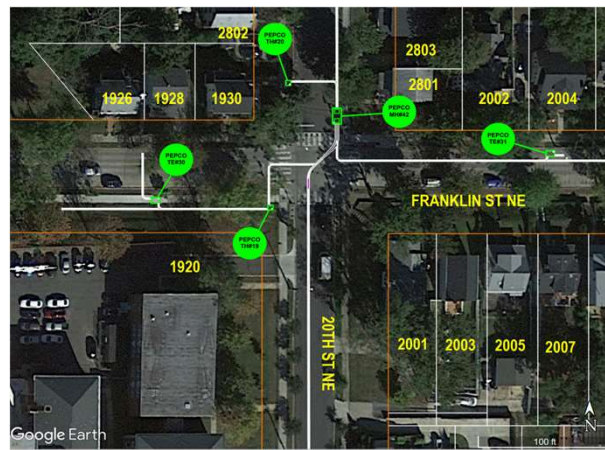
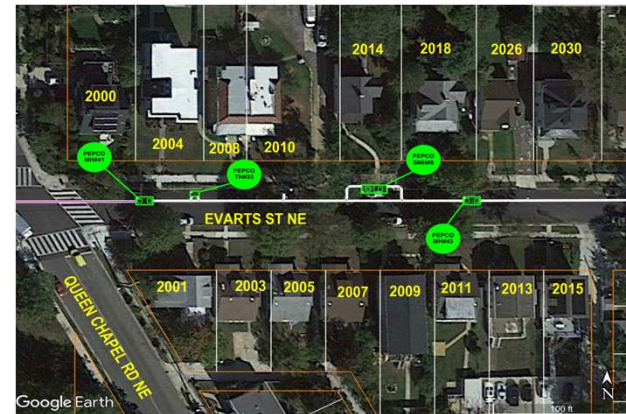
Feeder 14093 Aerial Photos



Feeder 14093 Aerial Photos



Feeder 14093 Aerial Photos



Feeder 14093 Aerial Photos



DC Business Engagement

- Contractor Forums
 - Pepco and DDOT jointly hosted contractor forums, sponsored a DC PLUG Initiative Networking Event for contractors, and hosted a project schedule update webinar for contractors
- Engagement
 - Pepco and DDOT will continue to conduct one-on-one meetings with Certified Business Enterprises (CBEs) and attend local events to learn about the capacity and capability of the local contracting community
- Communications
 - Pepco hired a woman-owned CBE firm responsible for development of all DC PLUG communications materials

Integrated Communications Strategy – DC PLUG Education Plan

Executing the DC PLUG Education Plan

- **Project Meeting Playbook**
 - Project Introduction (2 months prior)
 - Pre-Construction (at start of construction)
 - Construction Progress (during construction)
 - Emergency Meetings (if challenges arise)
- **Common Collateral**
 - Social Media Outreach
 - Undergrounding video
 - Project Fact Sheets
 - Flyers, Door Hangers
 - Project Area Maps
 - Work Site Signs
 - Outbound call(to notify about meeting, 30 days prior)
 - Project Hot Line: 1-844-758-4146
 - Project Web Site: dcpluginfo.com
 - Project Email Address: questions@dcpluginfo.com



Next Steps – With Focus on 14093

- Attendance at appropriate ANC and Civic Association meetings
- Communication to Stakeholders
- Placement of door hangers
- Worksite signs



Contact Us

Questions?



www.dcpluginfo.com



questions@dcpluginfo.com



1-844-758-4146



@pepcoconnect #DCPLUG

